

4J Submersible Borehole Pumps For 4" Well

Construction

Submersible borehole pumps for 4"(100mm) deep wells comes with various impellers and diffusers made of noryl material. A single piece stainless steel barrel casing prevents the pump from all robust conditions and all types of water corrosions. The life span of the pump set is comparatively higher than its predecessors.

Applications

- Agriculture
- Domestic Building Services
- Commercial Building Services
- Public Utilities

Operating Conditions

- Liquid temperature : upto 33 °C
- Total Solids : 3000ppm (Max.)
- Durability : 50ppm (Silica Scale Max.)
- Continuous duty

Water filled Rewindable motor

- 2-pole Induction motor, 50Hz (n= 2900 rpm)
- For single phase 230V and for Three Phase 440V
- Voltage tolerances : +6% -15%
- Insulation class : B

Special features

- Available with three phase models
- Winding designs for different voltage supplies
- Construction with required metals

MATERIAL SPECIFICATIONS

PUMP

Components	Materials
Suction Housing	Cast Iron FG 200
Diffuser	Noryl, GF30%
Impeller	Noryl, GF30%
Pump Shaft	SS 420
Sleeve	SS 410
NRV Body	Cast Iron
Locking Strip	SS 304
Guide Bushes	LTB4
Delivery Flange	SG Iron
Strainer	SS 202

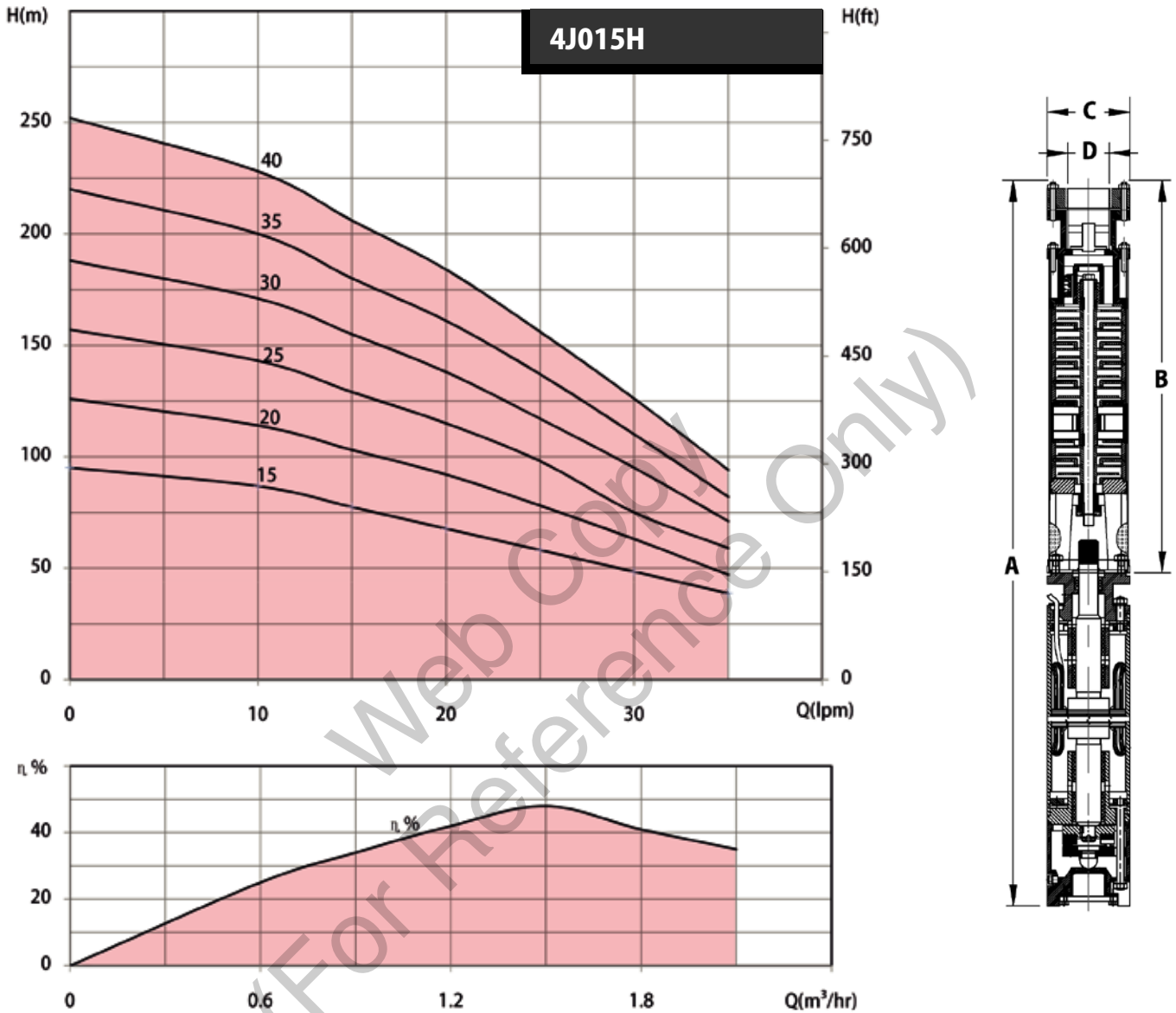
MOTOR

Components	Materials
Body	SS 304
Housings	Cast Iron FG 200
Rotor shaft	SS 420 (Hardened)
Thrust Bearing	Carbon , SS410
Bearing Bush	LTB4
Seal	Oil Seal, Nitrile Rubber



4J Submersible Borehole Pumps For 4" Well

Characteristic Curves



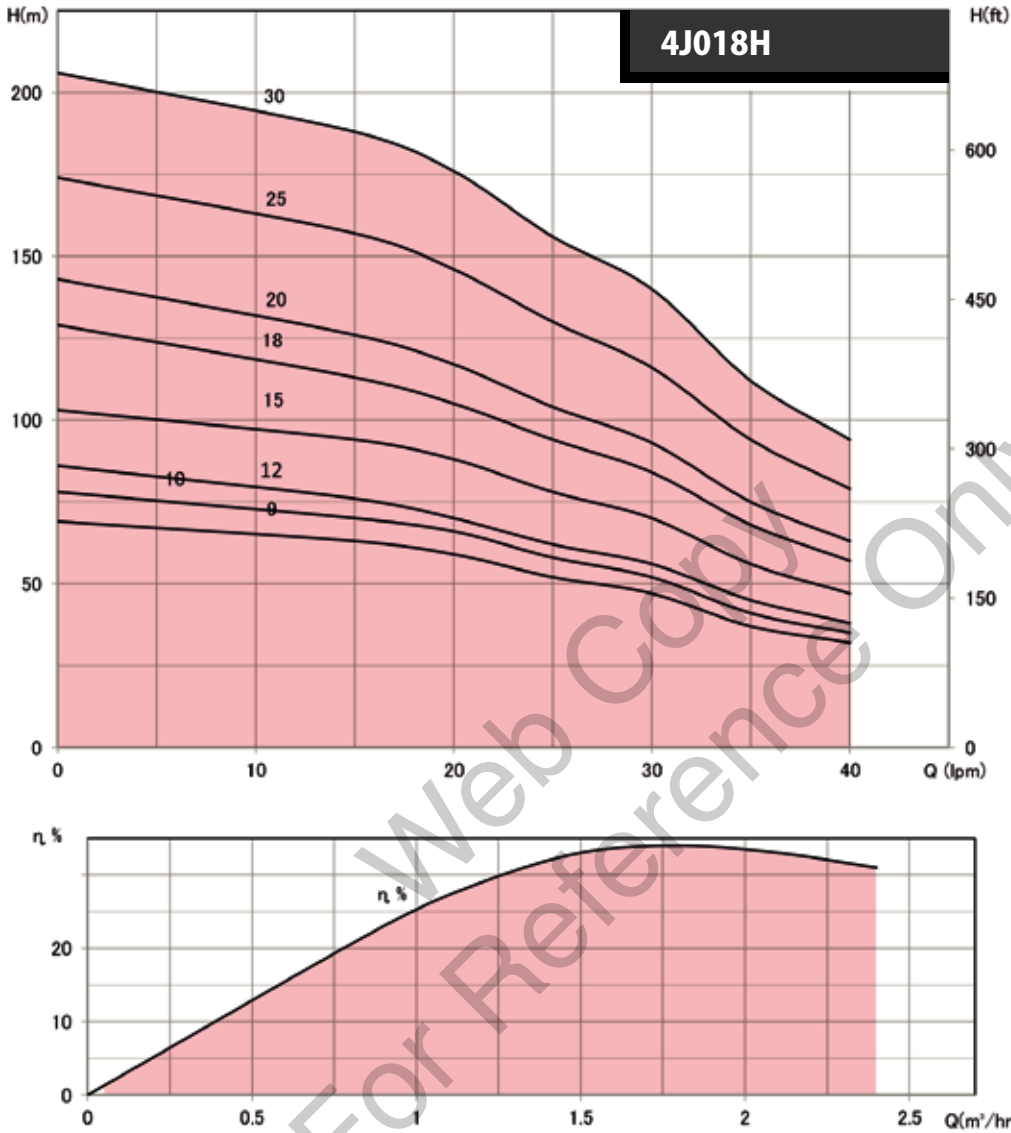
Hydraulic Performance & Dimensions

Product Code	HP	kW	Phase	Q - m³/hr									Dimensions in mm				DNM
				0	0.6	0.9	1.2	1.5	1.8	2.1	A	B	C	D			
4J015H/15	0.75	0.50	M/T	0	0.6	0.9	1.2	1.5	1.8	2.1	2.4	960	575	97.5	1.25"		
4J015H/20	1.0	0.75	M/T	0	0.6	0.9	1.2	1.5	1.8	2.1	2.4	1085	700	97.5	1.25"		
4J015H/25	1.5	1.1	M/T	0	0.6	0.9	1.2	1.5	1.8	2.1	2.4	1240	825	97.5	1.25"		
4J015H/30	1.5	1.1	M/T	0	0.6	0.9	1.2	1.5	1.8	2.1	2.4	1415	1000	97.5	1.25"		
4J015H/35	2.0	1.5	M/T	0	0.6	0.9	1.2	1.5	1.8	2.1	2.4	1580	1125	97.5	1.25"		
4J015H/40	2.0	1.5	M/T	0	0.6	0.9	1.2	1.5	1.8	2.1	2.4	1705	1250	97.5	1.25"		

* M - Single Phase, T - Three Phase, Q - Discharge, DNM - Nominal Diameter

4J Submersible Borehole Pumps For 4" Well

Characteristic Curves



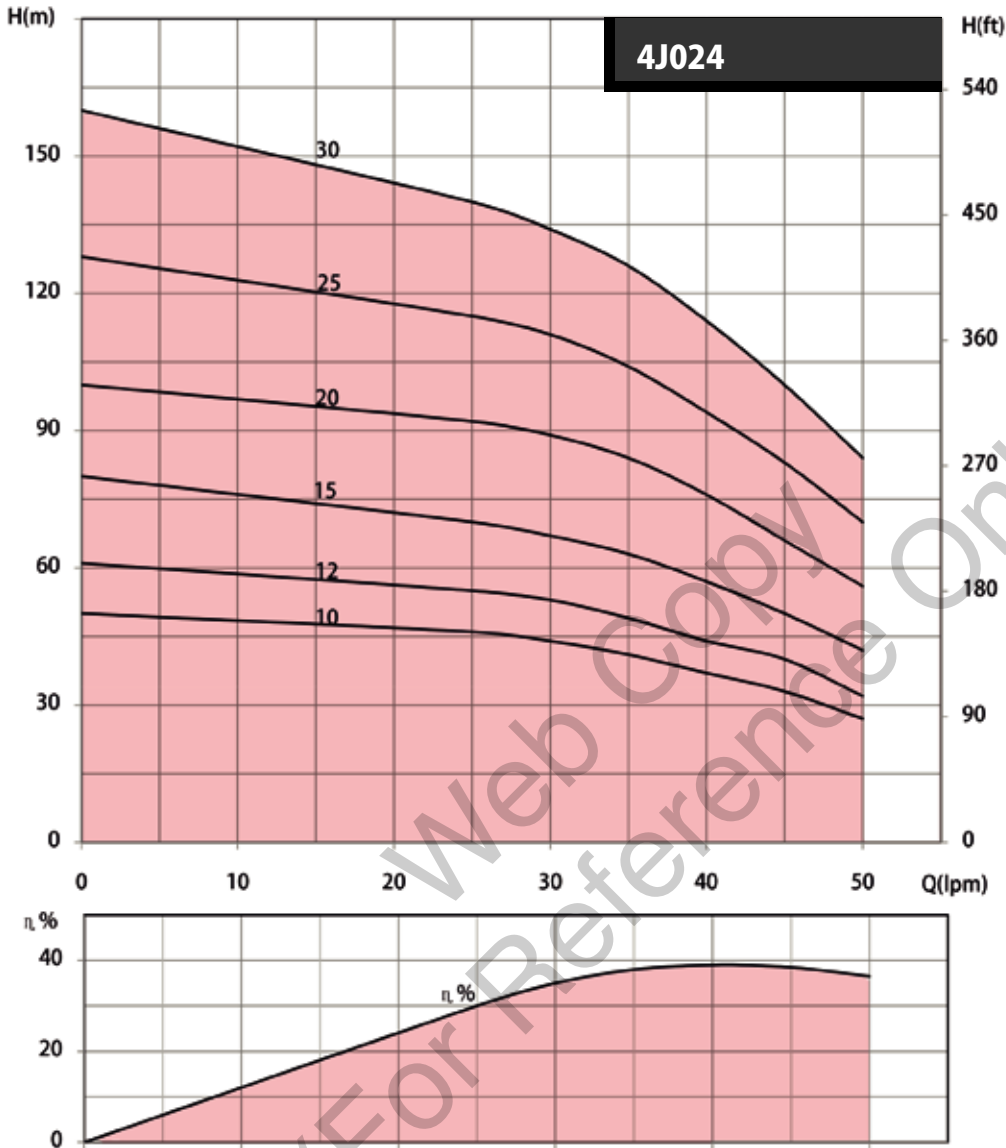
Hydraulic Performance & Dimensions

Product Code	HP	kW	Phase	Q - m³/hr	0	0.9	1.2	1.6	1.8	2.1	2.4	Dimensions in mm				DNM
				Q - LPM	0	15	20	25	30	35	40	A	B	C	D	
4J018H/9	0.5	0.37	M/T	Total Head in Metres	69	63	59	52	47	37	32	780	425	97.5	1.25"	
4J018H/10	0.75	0.5	M/T		78	70	66	58	52	41	35	805	450	97.5	1.25"	
4J018H/12	0.75	0.5	M/T		86	76	70	62	56	45	38	855	500	97.5	1.25"	
4J018H/15	1.0	0.75	M/T		103	94	88	78	70	56	47	960	575	97.5	1.25"	
4J018H/18	1.5	1.1	M/T		129	113	105	94	84	68	57	1065	650	97.5	1.25"	
4J018H/20	1.5	1.1	M/T		143	126	117	104	93	75	63	1115	700	97.5	1.25"	
4J018H/25	2.0	1.5	M/T		174	157	146	130	116	94	79	1280	825	97.5	1.25"	
4J018H/30	2.0	1.5	M/T		206	188	176	156	140	112	94	1455	1000	97.5	1.25"	

* M - Single Phase, T - Three Phase, Q - Discharge, DNM - Nominal Diameter

4J Submersible Borehole Pumps For 4" Well

Characteristic Curves



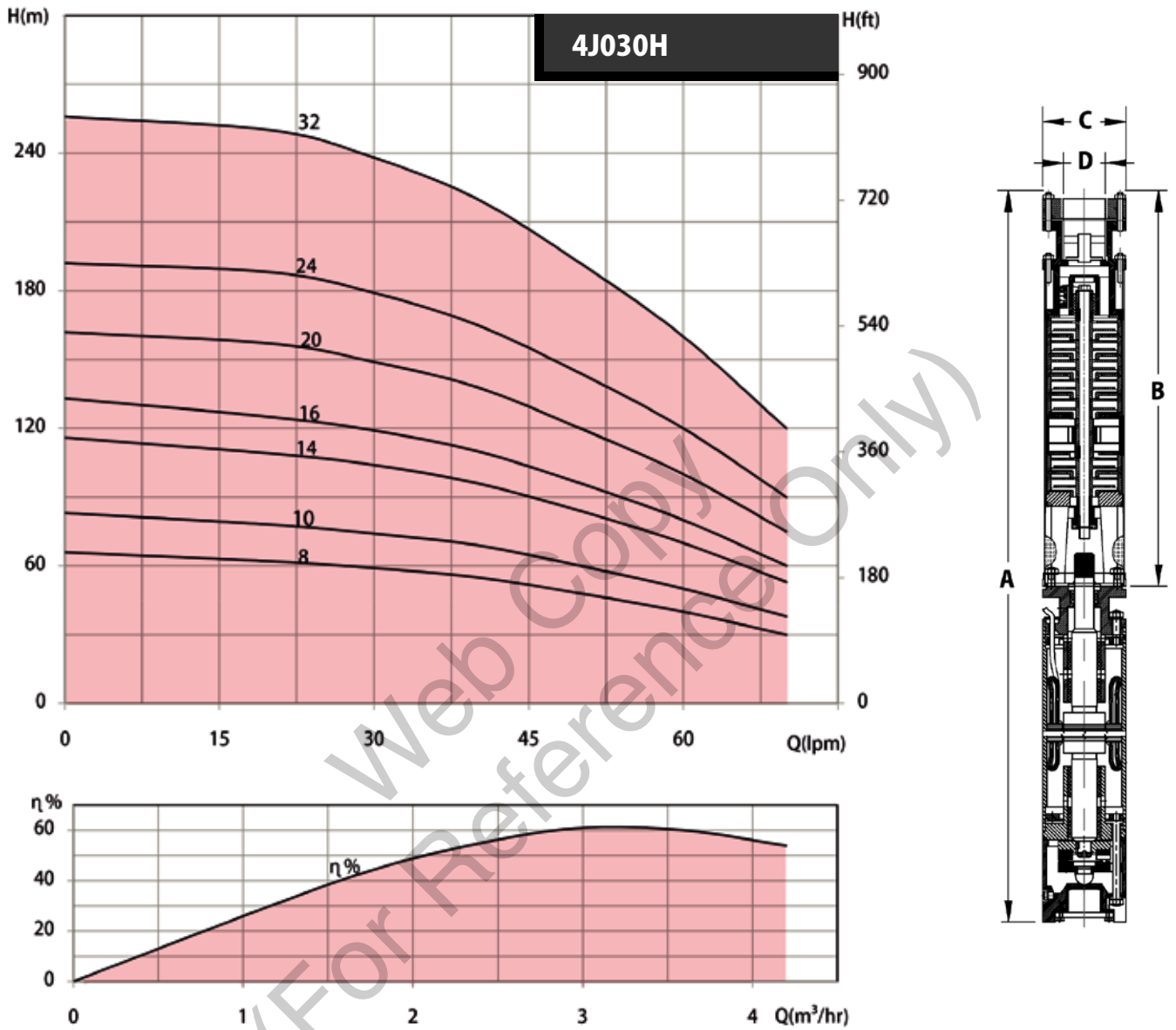
Hydraulic Performance & Dimensions

4J4	HP	kW	Phase	Q - m ³ /hr	0	1.5	1.8	2.1	2.4	2.7	3.0	Dimensions in mm				DNM
				Q - LPM	0	25	30	35	40	45	50	A	B	C	D	
4J024/10	0.75	0.5	M/T	Total Head in Metres	50	46	44	41	37	33	27	780	425	97.5	1.25"	
4J024/12	0.75	0.5	M/T		61	55	53	49	44	40	32	855	470	97.5	1.25"	
4J024/15	1.0	0.75	M/T		80	70	67	63	57	50	42	923	574	97.5	1.25"	
4J024/20	1.5	1.1	M/T		100	92	89	84	76	66	56	1065	650	97.5	1.25"	
4J024/25	2.0	1.5	M/T		128	115	111	104	94	83	70	1218	763	97.5	1.25"	
4J024/30	2.0	1.5	M/T		160	140	134	126	114	100	84	1331	876	97.5	1.25"	

* M - Single Phase, T - Three Phase, Q - Discharge, DNM - Nominal Diameter

4J Submersible Borehole Pumps For 4" Well

Characteristic Curves



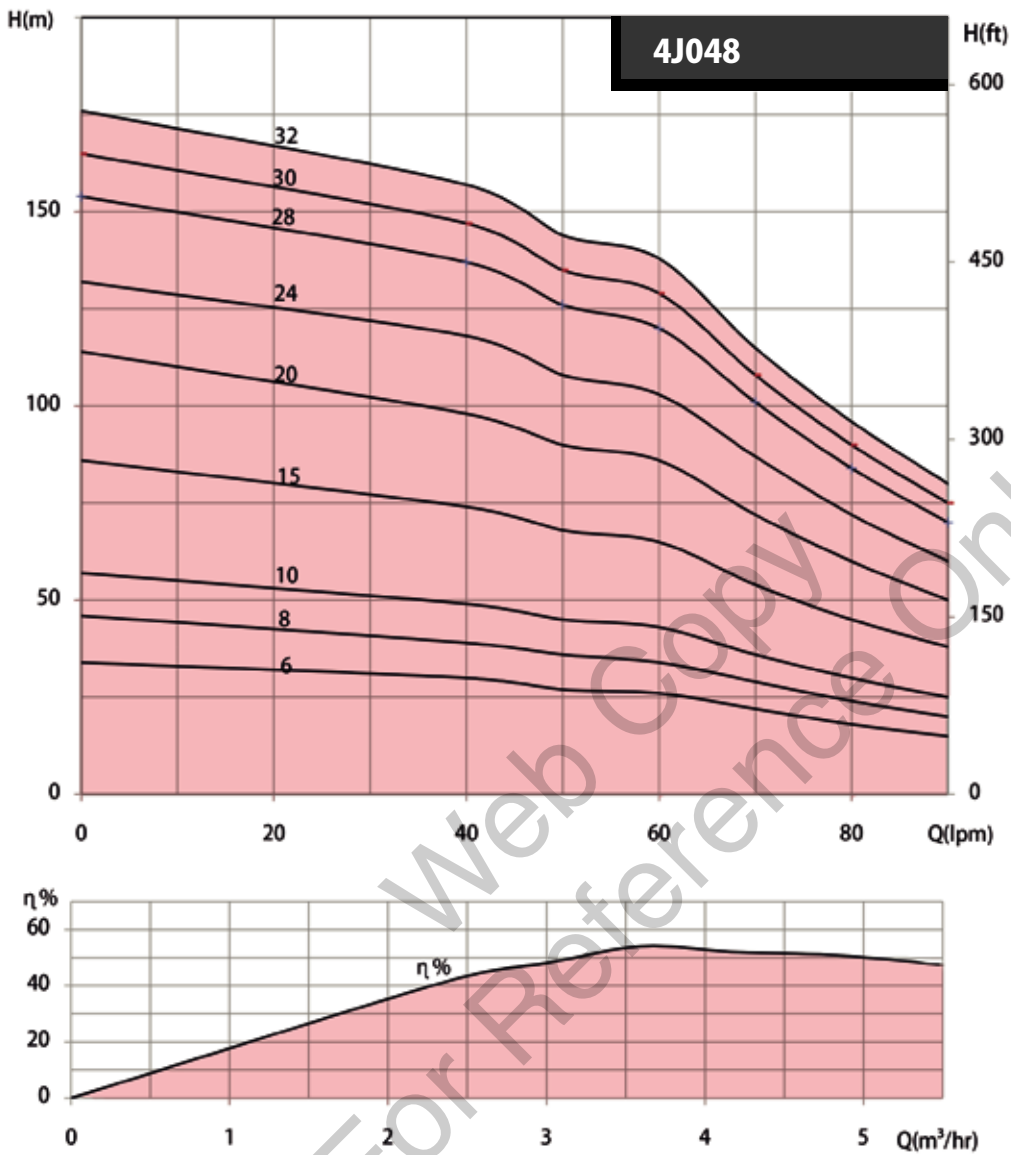
Hydraulic Performance & Dimensions

Product Code	HP	kW	Phase	Q - m³/hr								Dimensions in mm				DNM
				0	1.2	1.8	2.4	3.0	3.6	4.2	A	B	C	D		
4J030H/8	1.0	0.75	M/T	0	20	30	40	50	60	70	80	809	424	97.5	1.5"	
4J030H/10	1.0	0.75	M/T	0	20	30	40	50	60	70	80	865	480	97.5	1.5"	
4J030H/14	1.5	1.1	M/T	0	20	30	40	50	60	70	80	1007	592	97.5	1.5"	
4J030H/16	2.0	1.5	M/T	0	20	30	40	50	60	70	80	1103	648	97.5	1.5"	
4J030H/20	3.0	2.0	M/T	0	20	30	40	50	60	70	80	1470	760	97.5	1.5"	
4J030H/24	3.0	2.0	M/T	0	20	30	40	50	60	70	80	1582	872	97.5	1.5"	
4J030H/32	4.0	3.0	M/T	0	20	30	40	50	60	70	80	1806	1096	97.5	1.5"	

* M - Single Phase, T - Three Phase, Q - Discharge, DN - Nominal Diameter

4J Submersible Borehole Pumps For 4" Well

Characteristic Curves



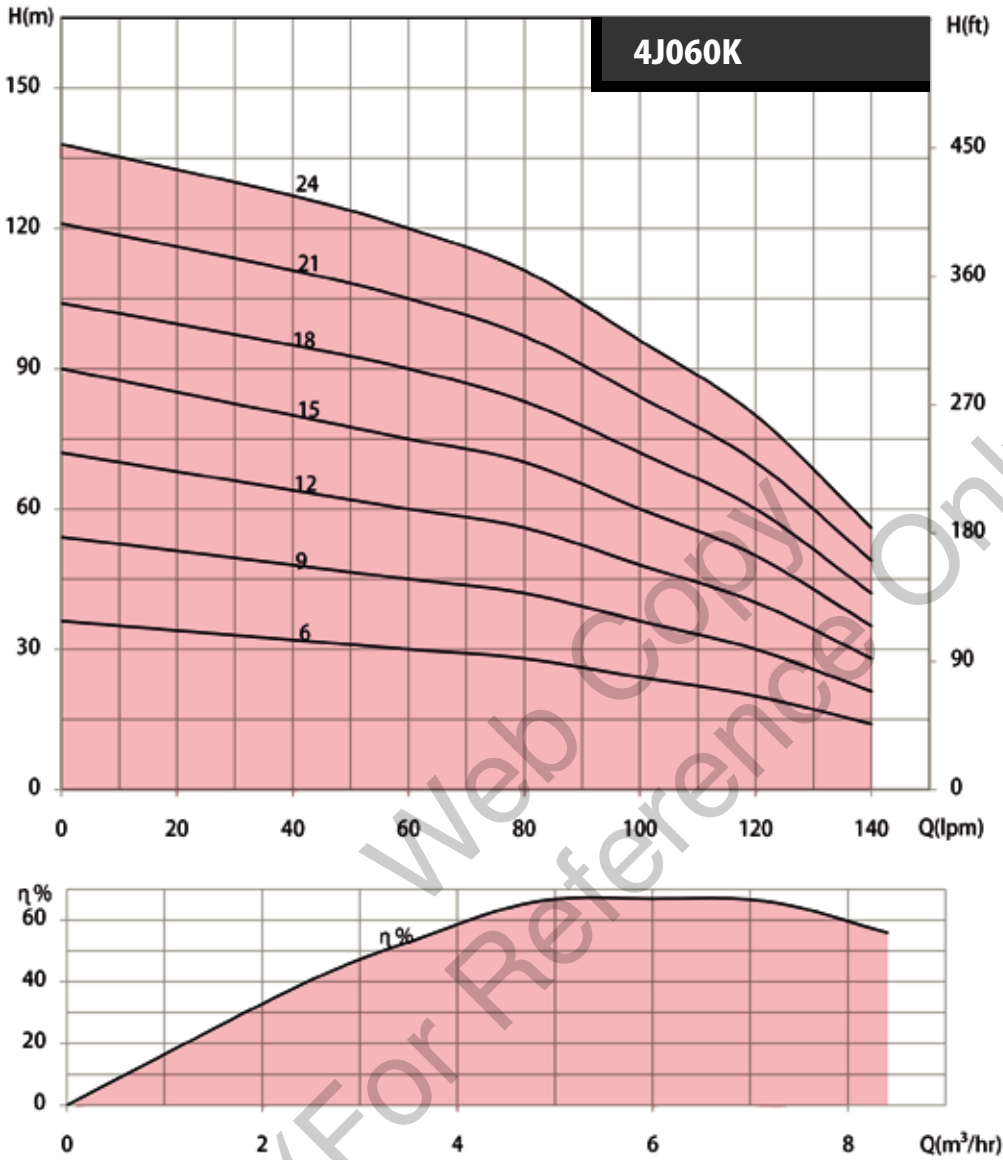
Hydraulic Performance & Dimensions

Product Code	HP	kW	Phase	Q - m³/hr								Dimensions in mm				DNM
				0	2.4	3.0	3.6	4.2	4.8	5.4	A	B	C	D		
				Q - LPM												
				0	40	50	60	70	80	90						
4J048/6	0.50	0.37	M/T	Total Head in Metres	34	30	27	26	22	18	15	705	350	97.5	1.5"	
4J048/8	0.75	0.50	M/T		46	39	36	34	29	24	20	755	400	97.5	1.5"	
4J048/10	1.0	0.75	M/T		57	49	45	43	36	30	25	835	450	97.5	1.5"	
4J048/15	1.5	1.1	M/T		86	74	68	65	54	45	38	990	575	97.5	1.5"	
4J048/20	2.0	1.5	M/T		114	98	90	86	72	60	50	1155	700	97.5	1.5"	
4J048/24	3.0	2.0	M/T		132	118	108	103	87	72	60	1510	800	97.5	1.5"	
4J048/28	3.0	2.0	M/T		154	137	126	120	101	84	70	1610	900	97.5	1.5"	
4J048/30	3.0	2.0	M/T		165	147	135	129	108	90	75	1660	950	97.5	1.5"	
4J048/32	4.0	3.0	M/T		176	157	144	138	115	96	80	1710	1000	97.5	1.5"	

* M - Single Phase, T - Three Phase, Q - Discharge, DNM - Nominal Diameter

4J Submersible Borehole Pumps For 4" Well

Characteristic Curves



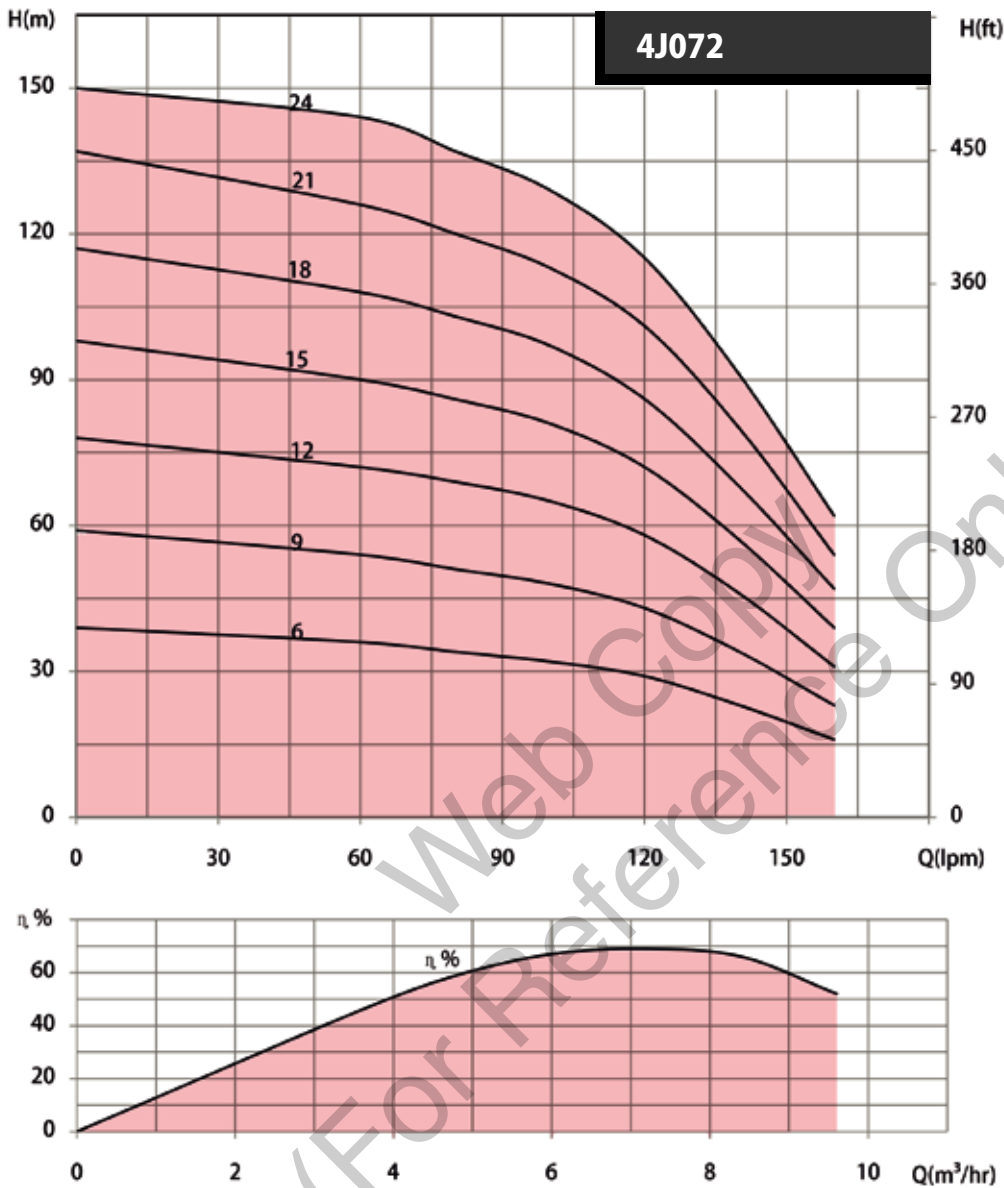
Hydraulic Performance & Dimensions

Product Code	HP	kW	Phase	Q - m³/hr								Dimensions in mm				DNM
				0	2.4	3.6	4.8	6.0	7.2	8.4	A	B	C	D		
4J060K/6	0.75	0.50	M/T	0	2.4	3.6	4.8	6.0	7.2	8.4	772	416	97.5	1.5"		
4J060K/9	1.0	0.75	M/T	0	2.4	3.6	4.8	6.0	7.2	8.4	909	524	97.5	1.5"		
4J060K/12	1.5	1.1	M/T	0	2.4	3.6	4.8	6.0	7.2	8.4	1047	632	97.5	1.5"		
4J060K/15	2.0	1.5	M/T	0	2.4	3.6	4.8	6.0	7.2	8.4	1195	740	97.5	1.5"		
4J060K/18	3.0	2.0	M/T	0	2.4	3.6	4.8	6.0	7.2	8.4	1558	848	97.5	1.5"		
4J060K/21	4.0	3.0	M/T	0	2.4	3.6	4.8	6.0	7.2	8.4	1666	956	97.5	1.5"		
4J060K/24	4.0	3.0	M/T	0	2.4	3.6	4.8	6.0	7.2	8.4	1774	1064	97.5	1.5"		

* M - Single Phase, T - Three Phase, Q - Discharge, DNM - Nominal Diameter

4J Submersible Borehole Pumps For 4" Well

Characteristic Curves



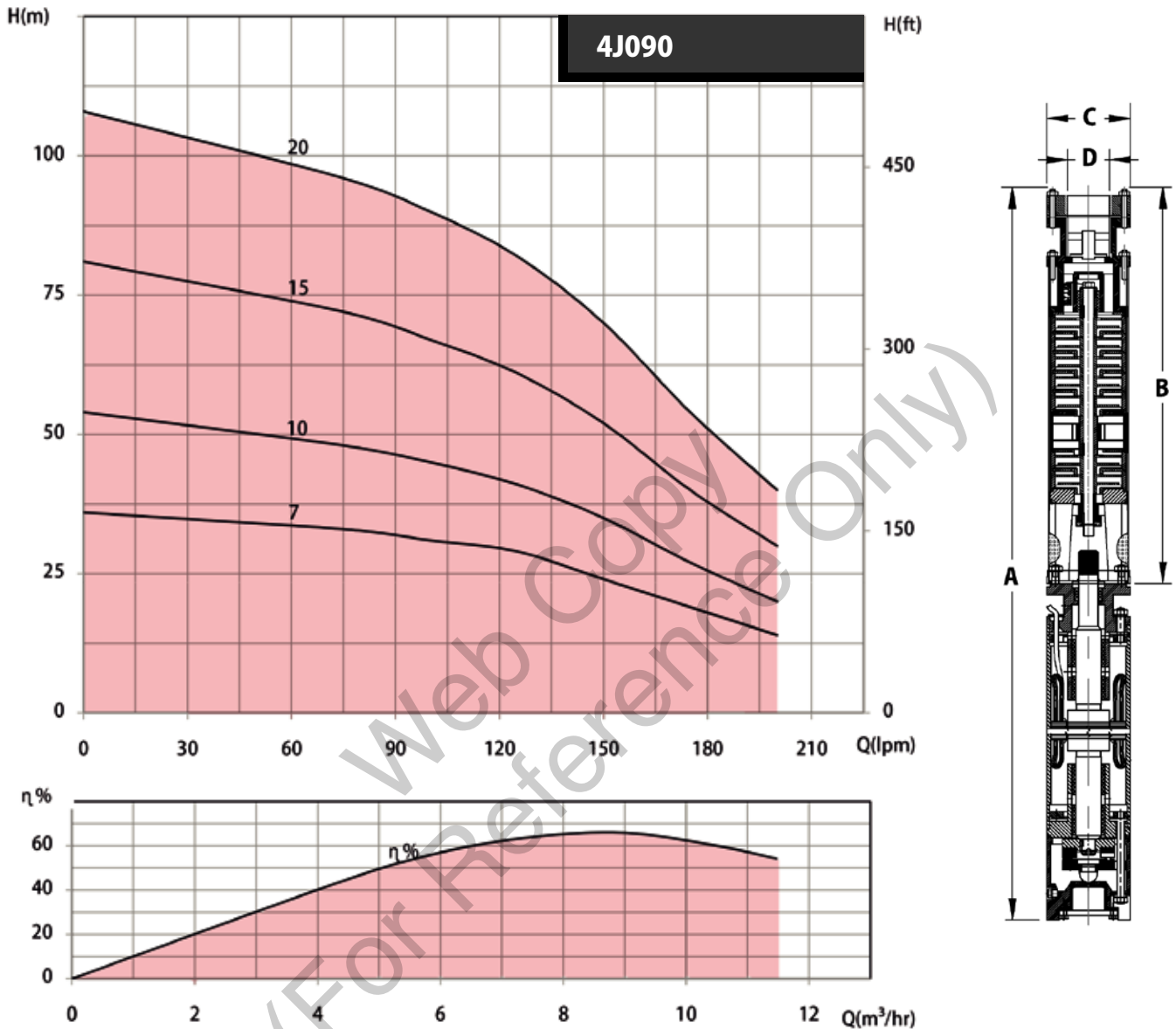
Hydraulic Performance & Dimensions

Product Code	HP	kW	Phase	Q - m³/hr								Dimensions in mm				DNM
				0	2.4	3.6	4.8	6.0	7.2	8.4	A	B	C	D		
4J072/6	1.0	0.75	M/T	Total Head in Metres	39	36	34	32	29	23	16	801	416	97.5	1.5"	
4J072/9	1.5	1.1	M/T		59	54	51	48	43	34	23	939	524	97.5	1.5"	
4J072/12	2.0	1.5	M/T		78	72	69	65	58	46	31	1087	632	97.5	1.5"	
4J072/15	3.0	2.0	M/T		98	90	86	81	72	57	39	1450	740	97.5	1.5"	
4J072/18	4.0	3.0	M/T		117	108	103	97	86	68	47	1558	848	97.5	1.5"	
4J072/21	5.0	3.7	T		137	126	120	113	101	80	54	1706	956	97.5	1.5"	
4J072/24	5.0	3.7	T		150	144	137	129	115	91	62	1814	1064	97.5	1.5"	

* M - Single Phase, T - Three Phase, Q - Discharge, DNM - Nominal Diameter

4J Submersible Borehole Pumps For 4" Well

Characteristic Curves



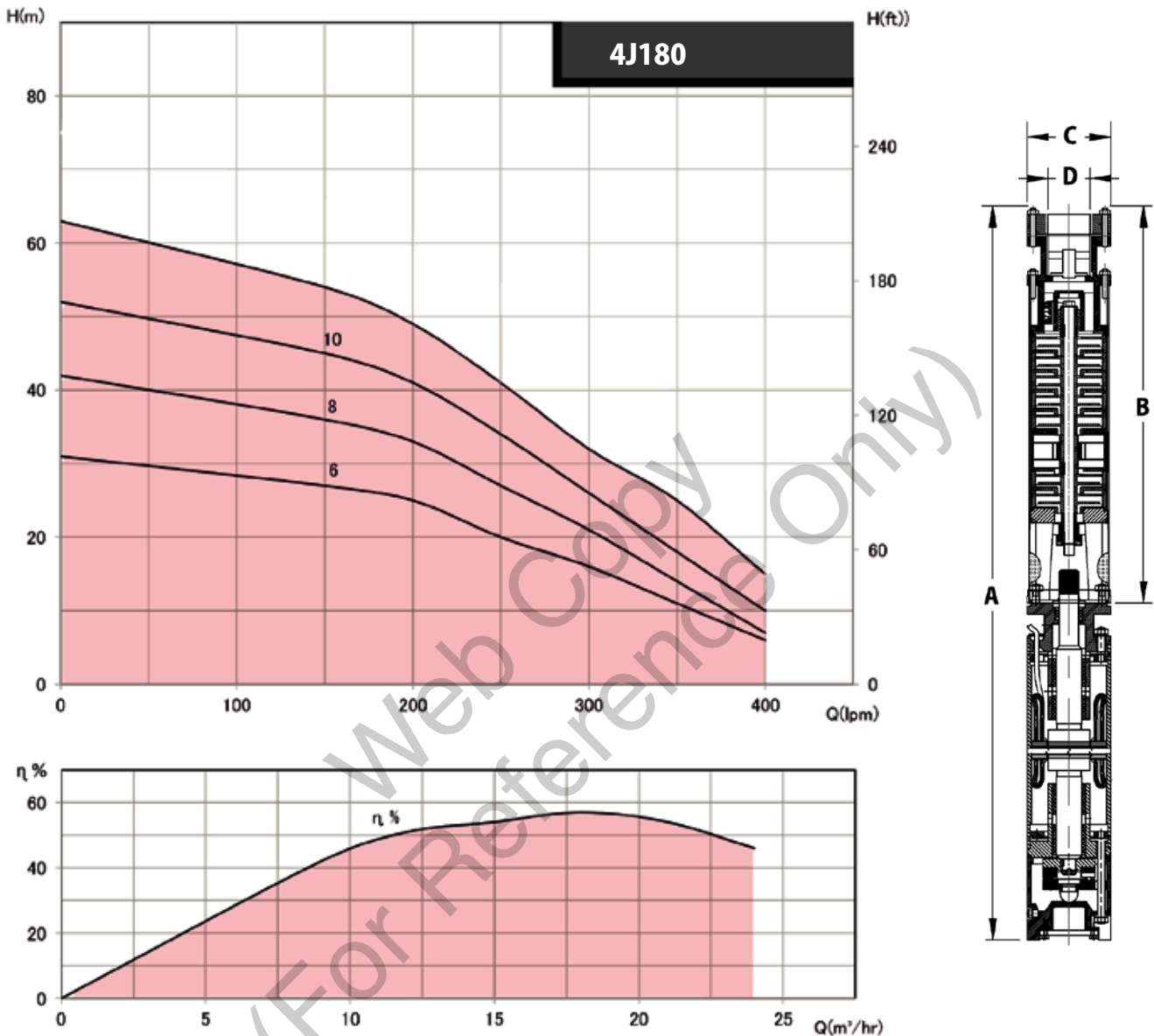
Hydraulic Performance & Dimensions

Product Code	HP	kW	Phase	Q - m³/hr								Dimensions in mm				DNM
				0	4.5	6.0	7.5	9.0	10.5	12.0	A	B	C	D		
4J090/7	1.5	1.1	M/T	Total Head in Metres	36	33	31	29	24	19	14	909	494	97.5	2"	
4J090/10	2.0	1.5	M/T		54	48	45	41	35	27	20	1083	620	97.5	2"	
4J090/15	3.0	2.0	M/T		81	72	67	61	52	40	30	1456	746	97.5	2"	
4J090/20	4.0	3.0	M/T		108	96	90	82	70	54	40	1666	956	97.5	2"	

* M - Single Phase, T - Three Phase, Q - Discharge, DNM - Nominal Diameter

4J Submersible Borehole Pumps For 4" Well

Characteristic Curves



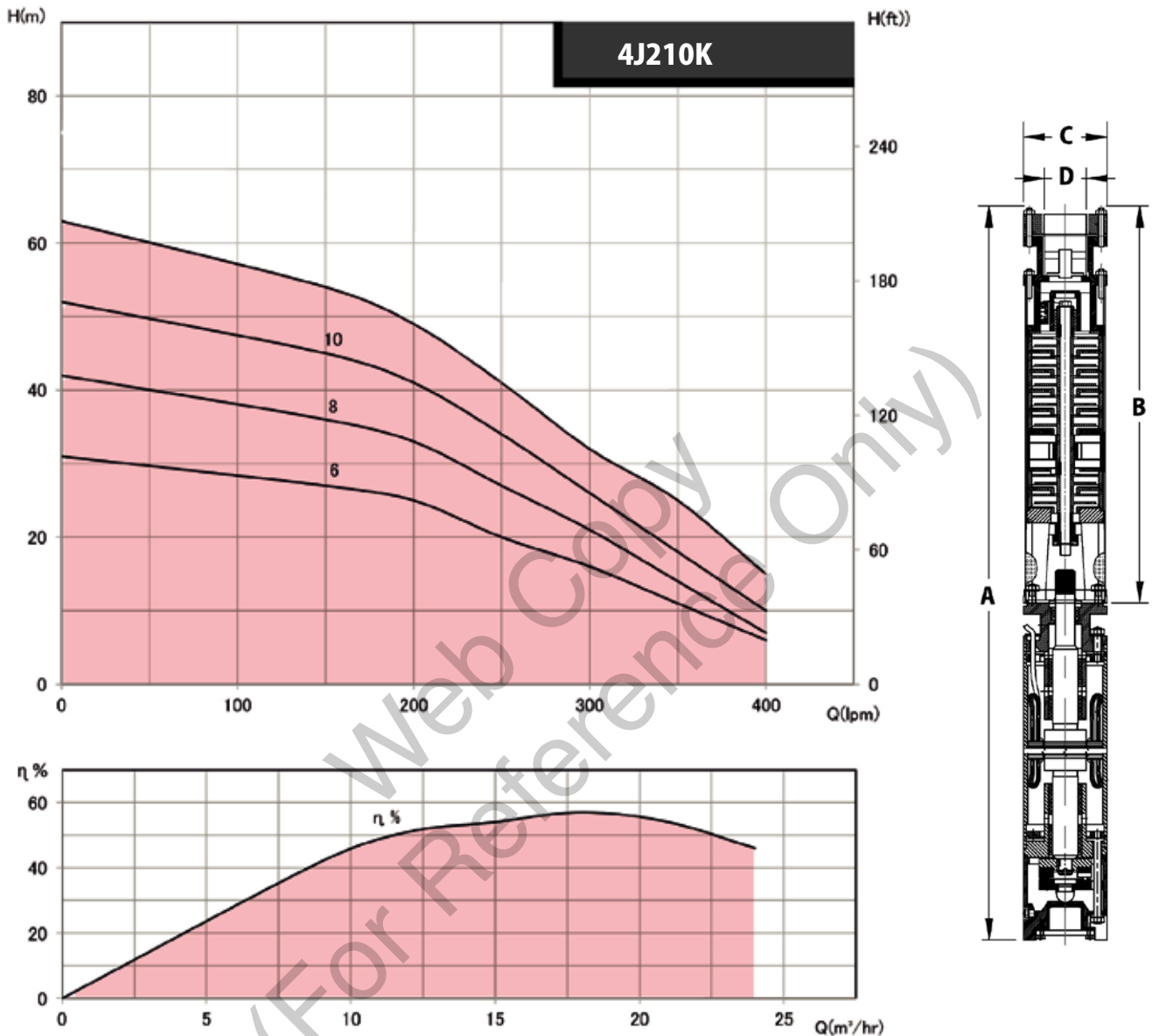
Hydraulic Performance & Dimensions

Product Code	HP	kW	Phase	Q - m³/hr	0	9.0	12.0	15.0	18.0	21.0	24.0	Dimension in mm				DNM
					Q - LPM	0	150	200	250	300	350	400	A	B	C	
4J180/6	2.0	1.5	M/T	Total Head in Metres	31	27	25	20	16	11	6	1360	710	97.5	2"	
4J180/8	3.0	2.0	M/T		42	36	33	27	21	14	7	1570	860	97.5	2"	
4J180/10	3.0	2.0	M/T		52	45	41	34	26	18	10	1720	1010	97.5	2"	
4J180/12	5.0	3.7	T		63	54	49	41	32	25	15	1910	1160	97.5	2"	

* M - Single Phase, T - Three Phase, Q - Discharge, DNM - Nominal Diameter

4J Submersible Borehole Pumps For 4" Well

Characteristic Curves



Hydraulic Performance & Dimensions

Product Code	HP	kW	Phase	Q - m ³ /hr	0	9.0	12.0	15.0	18.0	21.0	24.0	Dimension in mm				DNM
					Q - LPM	0	150	200	250	300	350	400	A	B	C	
4J210K/8	3.0	2.0	M/T	Total Head in Metres	43	36	33	30	26	21	15	1615	905	97.5	2.5"	
4J210K/10	3.0	2.0	M/T		54	45	41	37	32	26	19	1765	1055	97.5	2.5"	
4J210K/12	5.0	3.7	T		64	54	49	44	39	31	23	1955	1205	97.5	2.5"	
4J210K/14	6.0	4.5	T		75	65	60	52	45	37	27	2105	1355	97.5	2.5"	

* M - Single Phase, T - Three Phase, Q - Discharge, DNM - Nominal Diameter