

4S

Submersible Borehole Pumps For 4" Well

Construction

Submersible borehole pumps for 4"(100mm) deep wells comes with various model impellers. The Elegant, sleek and light weight Sheet metal Diffuser and Impeller can with stand all types of water corrosions. The life span of the pump sets are comparatively higher than the noryl type pump sets.

Applications

- Agriculture
- Domestic Building Services
- Commercial Building Services
- Public Utilities

Operating Conditions

- Liquid temperature : upto 40 °C
- Total Solids : 3000ppm (Max.)
- Durability : 50ppm (Silica Scale Max.)
- Continuous duty

Water filled Rewindable motor

- 2-pole Induction motor, 50Hz (n= 2900 rpm)
- For single phase 230V and for Three Phase 440V
- Voltage tolerances : +6% -15%
- Insulation class : B

Special features

- Available with three phase models
- Winding designs for different voltage supplies
- Construction with required metals

MATERIAL SPECIFICATIONS

PUMP

Components	Materials
Suction Housing	SS 304
Diffuser	SS 304 Fabricated
Impeller	SS 304 Fabricated
Pump Shaft	SS 304
Sleeve	SS 410
NRV Body	SG Iron
Locking Strip	SS 304
Guide Bushes	LTB4
Delivery Flange	SG Iron
Strainer	SS 202

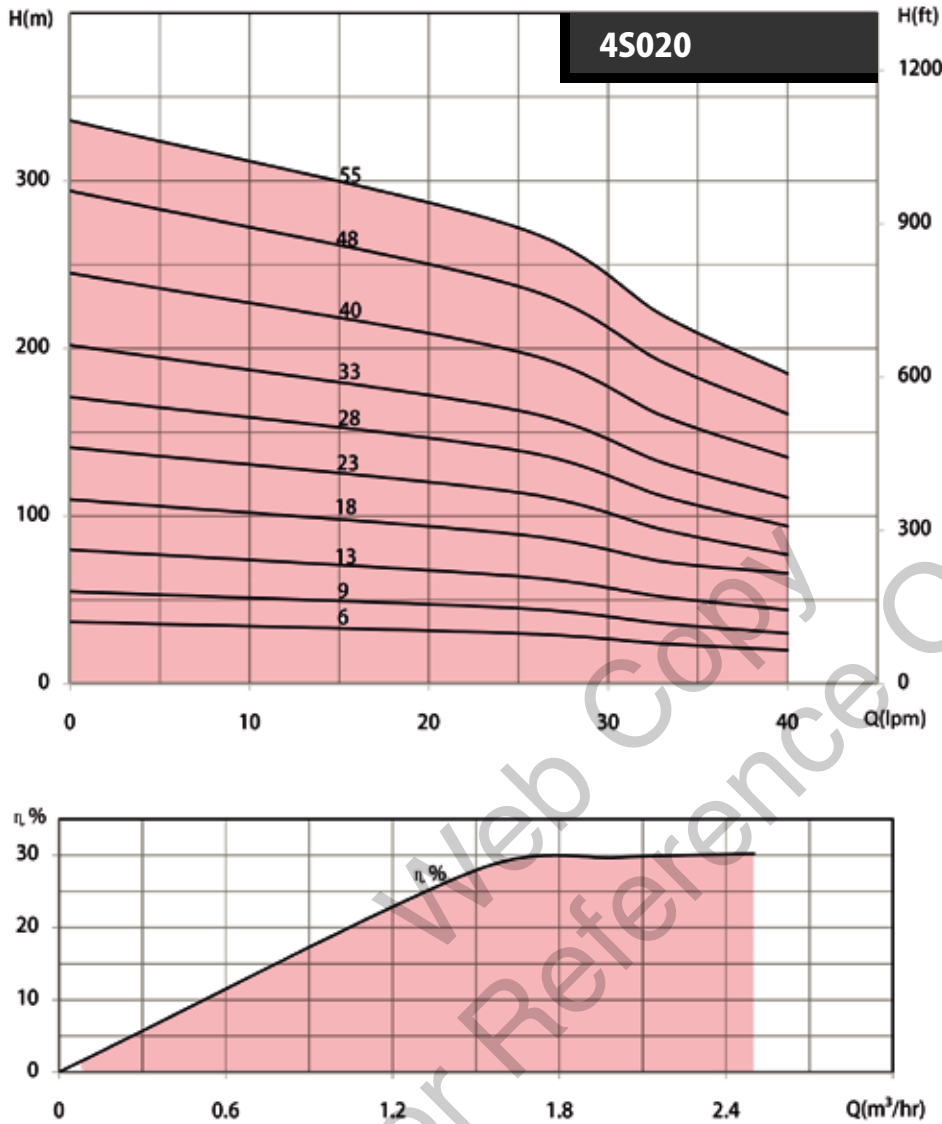
MOTOR

Components	Materials
Body	SS 304
Housings	Cast Iron FG 200
Rotor shaft	SS 420 (Hardened)
Thrust Bearing	Carbon , SS410
Bearing Bush	LTB4
Seal	Oil Seal, Nitrile Rubber



4S Submersible Borehole Pumps For 4" Well

Characteristic Curves



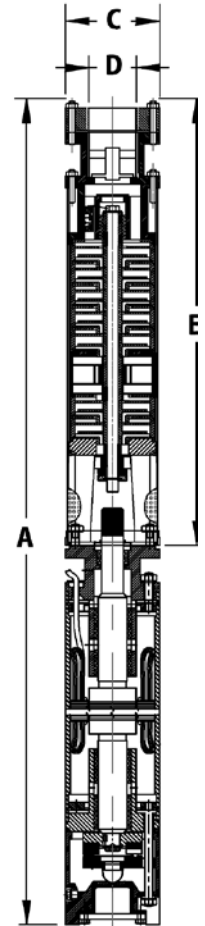
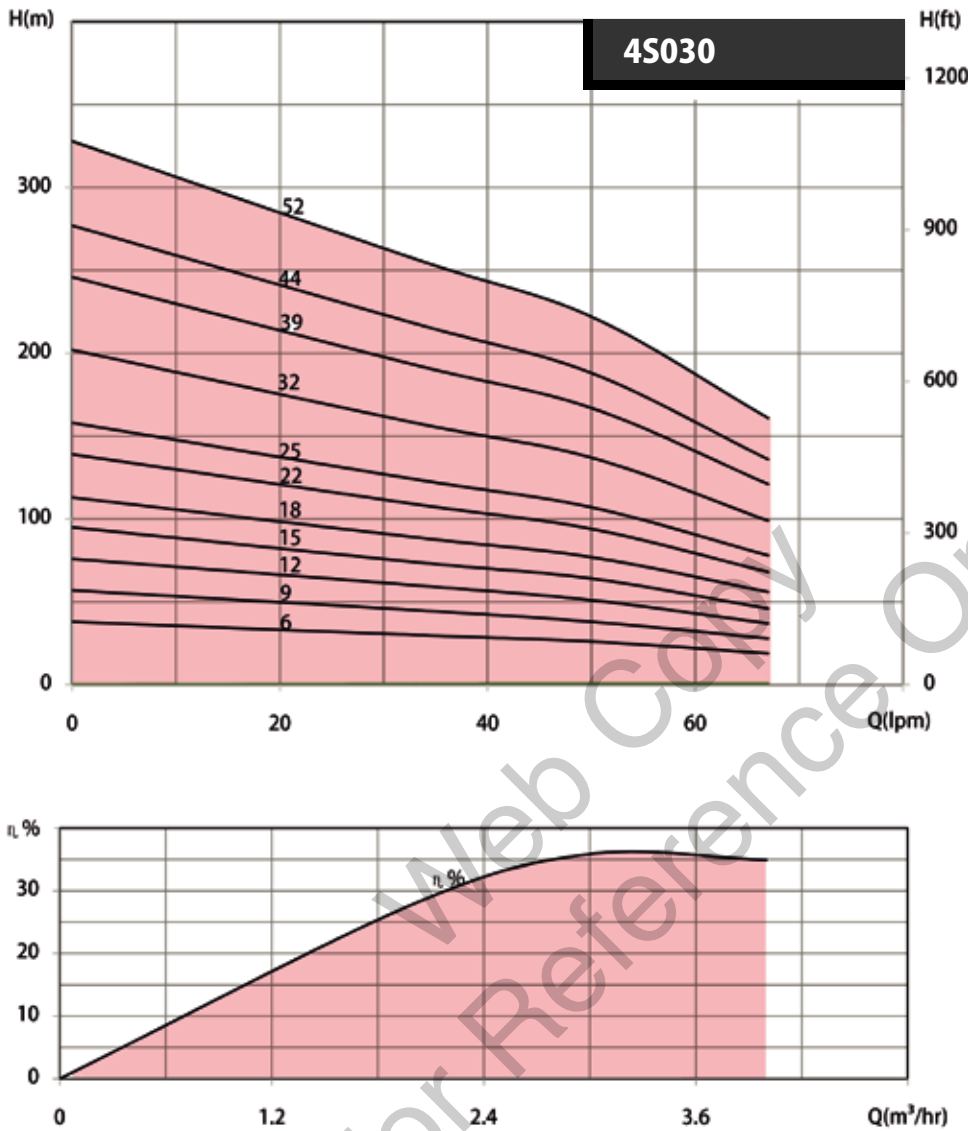
Hydraulic Performance & Dimensions

Product Code	HP	kW	Phase	Q - m ³ /hr	0	0.6	0.9	1.2	1.5	2	2.5	Dimensions in mm				DNM
					Q - LPM	0	10	15	20	25	33	40	A	B	C	
4S020/6	0.5	0.37	M	Total Head in Metres	37	35	33	31	30	24	20	811	281	97.5	1.25"	
4S020/9	0.5	0.37	M		55	52	50	48	45	36	30	874	344	97.5	1.25"	
4S020/13	0.75	0.5	M		80	75	72	68	64	52	44	958	428	97.5	1.25"	
4S020/18	1.0	0.75	M/T		110	102	99	95	89	73	66	1063	533	97.5	1.25"	
4S020/23	1.5	1.1	M/T		141	132	128	120	114	92	77	1208	638	97.5	1.25"	
4S020/28	2.0	1.5	M/T		171	161	155	148	139	112	94	1393	743	97.5	1.25"	
4S020/33	2.0	1.5	M/T		202	188	181	171	163	132	n	1498	848	97.5	1.25"	
4S020/40	3.0	2.0	M/T		245	230	220	210	198	160	135	1705	995	97.5	1.25"	
4S020/48	3.0	2.0	M/T		294	275	265	251	237	192	161	1873	1163	97.5	1.25"	
4S020/55	4.0	3.0	T		336	315	303	290	272	220	185	2020	1310	97.5	1.25"	

* M - Single Phase, T - Three Phase, Q - Discharge, DN - Nominal Diameter

4S Submersible Borehole Pumps For 4" Well

Characteristic Curves



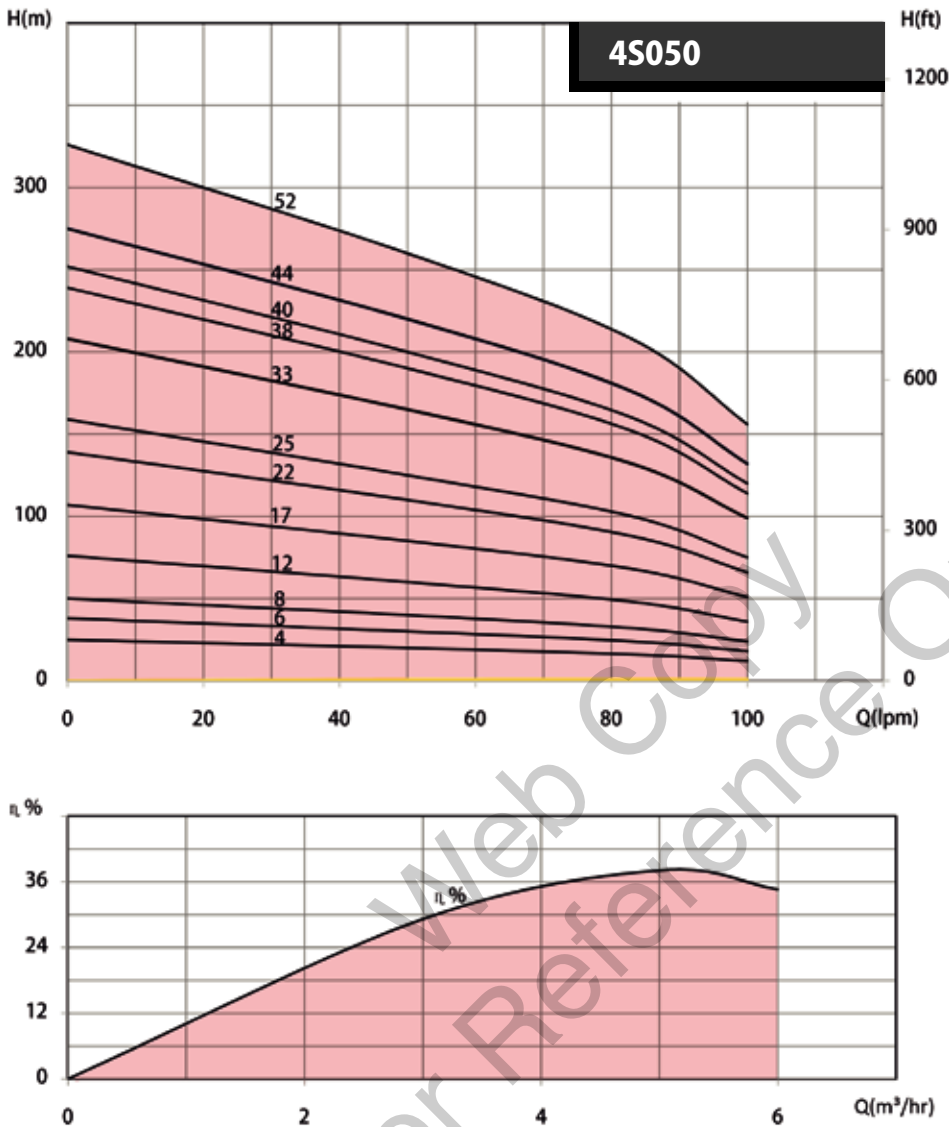
Hydraulic Performance & Dimensions

Product Code	HP	kW	Phase	Q - m³/hr	0	0.9	1.5	2.0	3.0	3.6	4.0	Dimensions in mm				DNM
					Q - LPM	0	15	25	33	50	60	67	A	B	C	
4S030/6	0.5	0.37	M	Total Head in Metres	38	35	32	30	26	22	19	811	281	97.5	1.25"	
4S030/9	0.75	0.50	M		57	51	49	45	38	32	28	874	344	97.5	1.25"	
4S030/12	1.0	0.75	M/T		76	70	65	60	51	42	37	937	407	97.5	1.25"	
4S030/15	1.5	1.1	M/T		95	87	80	74	64	52	46	1040	470	97.5	1.25"	
4S030/18	1.5	1.1	M/T		113	105	95	89	77	63	56	1103	533	97.5	1.25"	
4S030/22	2.0	1.5	M/T		139	126	118	109	94	78	68	1267	617	97.5	1.25"	
4S030/25	2.0	1.5	M/T		158	145	135	124	107	88	78	1330	680	97.5	1.25"	
4S030/32	3.0	2.0	M/T		202	185	170	158	137	112	99	1537	827	97.5	1.25"	
4S030/39	4.0	3.0	T		246	225	208	193	167	138	121	1624	914	97.5	1.25"	
4S030/44	4.0	3.0	T		277	251	235	218	188	152	136	1789	1079	97.5	1.25"	
4S030/52	5.0	3.7	T		328	298	275	257	222	182	161	1997	1247	97.5	1.25"	

* M - Single Phase, T - Three Phase, Q - Discharge, DNM - Nominal Diameter

4S Submersible Borehole Pumps For 4" Well

Characteristic Curves



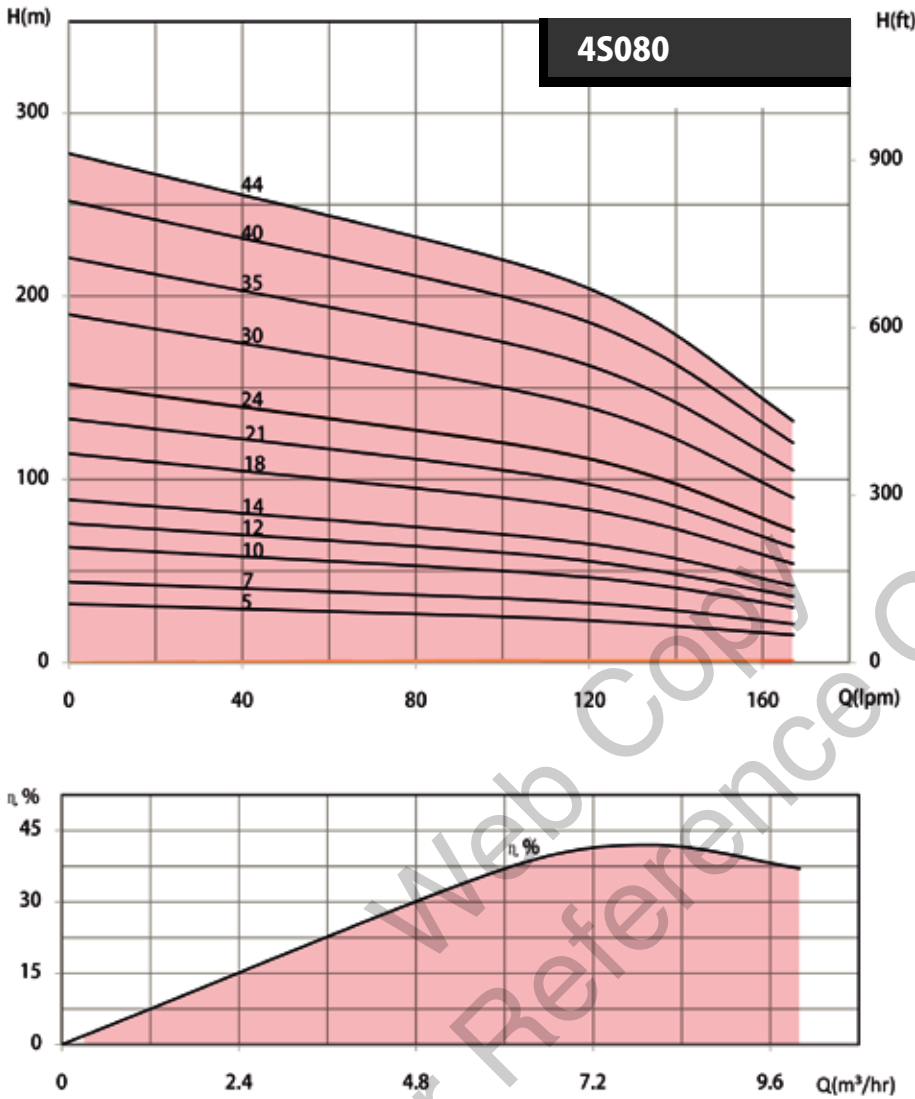
Hydraulic Performance & Dimensions

Product Code	HP	kW	Phase	Q - m ³ /hr								Dimensions in mm				DNM
				0	0.6	1.5	3	4.5	5.0	6.0	A	B	C	D		
4S050/4	0.50	0.37	M	0	10	25	50	75	83	100	769	239	97.5	1.5"		
4S050/6	0.75	0.50	M	0	10	25	50	75	83	100	811	281	97.5	1.5"		
4S050/8	1.0	0.75	M/T	0	10	25	50	75	83	100	853	323	97.5	1.5"		
4S050/12	1.5	1.1	M/T	0	10	25	50	75	83	100	977	407	97.5	1.5"		
4S050/17	2.0	1.5	M/T	0	10	25	50	75	83	100	1162	512	97.5	1.5"		
4S050/22	3.0	2.0	M/T	0	10	25	50	75	83	100	1327	617	97.5	1.5"		
4S050/25	4.0	3.0	T	0	10	25	50	75	83	100	1390	680	97.5	1.5"		
4S050/33	5.0	3.7	T	0	10	25	50	75	83	100	1598	848	97.5	1.5"		
4S050/38	5.0	3.7	T	0	10	25	50	75	83	100	1703	953	97.5	1.5"		
4S050/40	5.0	3.7	T	0	10	25	50	75	83	100	1745	995	97.5	1.5"		
4S050/44	5.0	3.7	T	0	10	25	50	75	83	100	1829	1079	97.5	1.5"		
4S050/52	7.5	5.5	T	0	10	25	50	75	83	100	1997	1247	97.5	1.5"		

* M - Single Phase, T - Three Phase, Q - Discharge, DNM - Nominal Diameter

4S Submersible Borehole Pumps For 4" Well

Characteristic Curves



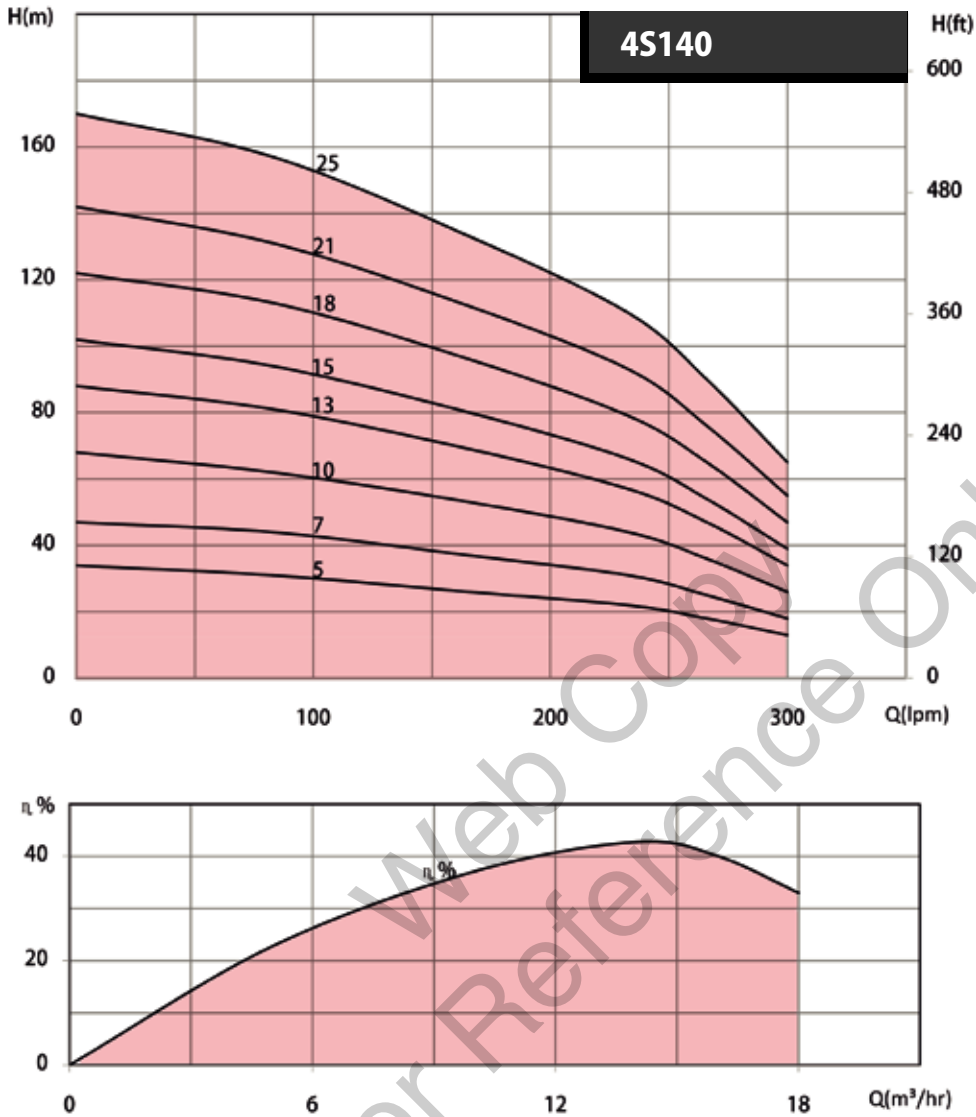
Hydraulic Performance & Dimensions

Product Code	HP	kW	Phase	Q - m³/hr	0	1.5	3.0	4.5	6.0	8.0	10.0	Dimensions in mm				DNM
					Q - LPM	0	25	50	75	100	133	167	A	B	C	
4S080/5	1.0	0.75	M/T	Total Head in Metres	32	31	29	27	25	21	15	818	288	97.5	2"	
4S080/7	1.5	1.1	M/T		44	42	40	38	35	30	21	913	343	97.5	2"	
4S080/10	2.0	1.5	M/T		63	61	57	53	50	43	30	1075	425	97.5	2"	
4S080/12	3	2	M/T		76	72	69	65	60	51	36	1190	480	97.5	2"	
4S080/14	3.0	2.0	M/T		89	86	81	75	70	60	42	1245	535	97.5	2"	
4S080/18	4	3	T		114	111	103	97	90	77	54	1355	645	97.5	2"	
4S080/21	5.0	3.7	T		133	130	120	112	105	90	63	1478	728	97.5	2"	
4S080/24	5	3.7	T		152	147	139	130	120	103	72	1560	810	97.5	2"	
4S080/30	7.5	5.5	T		190	185	174	161	150	129	90	1775	975	97.5	2"	
4S080/35	7.5	5.5	T		221	215	202	189	175	150	105	1775	1113	97.5	2"	
4S080/40	10.0	7.5	T		252	245	220	215	200	172	120	2090	1250	97.5	2"	
4S080/44	10	7.5	T		278	270	255	235	220	189	132	2090	1360	97.5	2"	

* M - Single Phase, T - Three Phase, Q - Discharge, DNM - Nominal Diameter

4S Submersible Borehole Pumps For 4" Well

Characteristic Curves



Hydraulic Performance & Dimensions

Product Code	HP	kW	Phase	Q - m³/hr	0	2.4	5.0	10.0	14.0	16.0	18.0	Dimensions in mm				DNM
				Q - LPM	0	40	83	166	233	266	300	A	B	C	D	
4S140/5	2.0	1.1	M/T	Total Head in Metres	34	32	31	26	22	18	13	1065	415	97.5	2"	
4S140/7	3.0	2.0	M/T		47	45	44	37	31	25	18	1225	515	97.5	2"	
4S140/10	4.0	3.0	T		68	66	62	53	44	36	26	1375	665	97.5	2"	
4S140/13	5.0	3.7	T		88	85	81	69	57	47	34	1565	815	97.5	2"	
4S140/15	7.5	5.5	T		102	97	94	80	66	54	39	1665	915	97.5	2"	
4S140/18	7.5	5.5	T		122	118	113	96	79	65	47	1815	1065	97.5	2"	
4S140/21	10.0	7.5	T		142	137	131	112	93	76	55	2015	1215	97.5	2"	
4S140/25	10.0	7.5	T		170	160	157	133	110	90	65	2265	1415	97.5	2"	

* M - Single Phase, T - Three Phase, Q - Discharge, DN - Nominal Diameter